

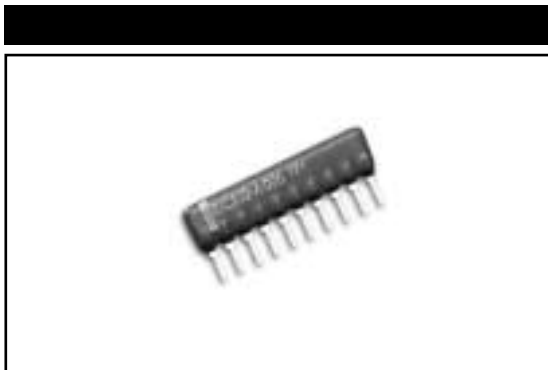
MODEL CR SERIES

Single-In-Line

Conformal Coated

Resistor/Capacitor

Networks



FEATURES

- 4 to 14 Leads
- Standard and custom circuits
- Space saving design

ELECTRICAL (CAPACITOR)

| | | | | |
|------------------------------------------|------------------------------------------------------|----------------|----------------|------------------------|
| Rated Voltage | 25Vdc, 50Vdc, 100Vdc | | | |
| Capacitance Range | 10pF to 470,000pF (Custom 2.2pF to 10pF max.) | | | |
| Tolerance | J Tol. ±5% | K Tol. ±10% | M Tol. ±20% | Z Tol. +80% to -20% |
| Temperature Coefficient (% of Change) | Refer to Dielectric Table | | | |
| Operating Temperature Range | CG, SL & X7R: -55°C to +125°C Y5V: -30°C to +85°C | | | |

ELECTRICAL (RESISTOR)

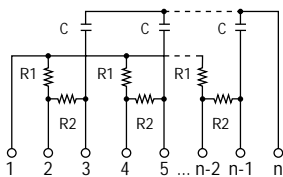
| | | | |
|---------------------------------------|-------------------------|---------------|----------------|
| Power Dissipation, Watts, at 70°C | 1/8 to 1/4 per resistor | | |
| Operating Voltage, Maximum | 100Vdc | | |
| Standard Resistance Range, Ohms | 10 to 2.2 Meg | | |
| Standard Resistance Tolerance | G. Tol. ±2% | J Tol. ±5% | K Tol. ±10% |
| Temperature Coefficient of Resistance | 100 to 300ppm/°C | | |
| Operating Temperature Range | -55°C to +125°C | | |

DIELECTRIC TABLE

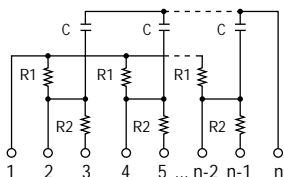
| Dielectric | Code | Characteristics | Values |
|------------|------|-----------------------------|-----------------|
| SL | S | +350/-1,000/°C | 10pF to 3,300pF |
| X7R | X | ±15% (-55 to +125°C) | 680pF to 47nF |
| Y5V | Y | +22% to -82% (-30 to +85°C) | 10pF to 1,500pF |
| CG (NPO) | CG | ±30ppm/°C | 10pF to 1,500pF |

Specifications subject to change without notice.

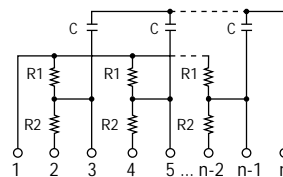
-A Circuit



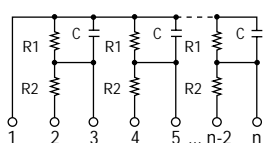
-B Circuit



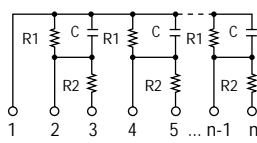
-C Circuit



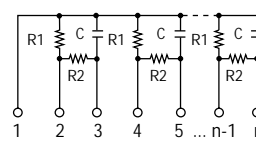
-G Circuit



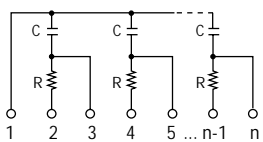
-H Circuit



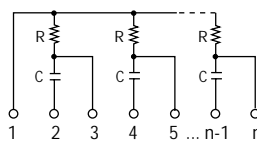
-I Circuit



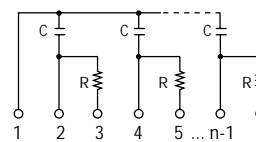
-K Circuit



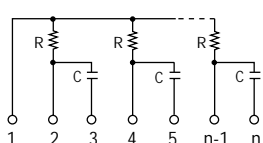
-L Circuit



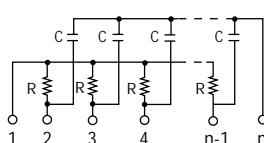
-M Circuit



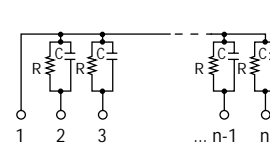
-N Circuit



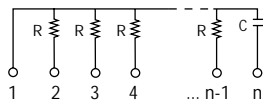
-S Circuit



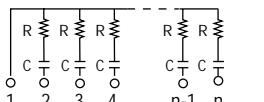
-T Circuit



-U Circuit

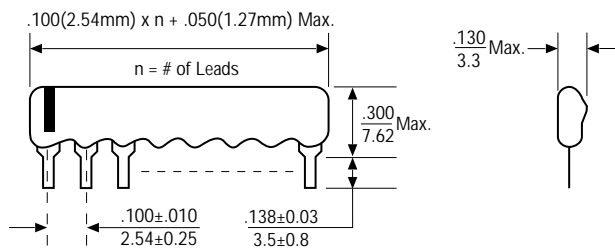


-1 Circuit

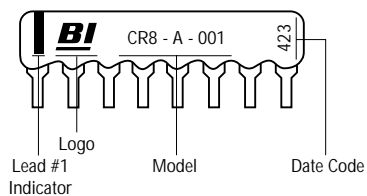


Note: Custom circuits are available. Consult factory.

OUTLINE DIMENSIONS (Inch/mm)

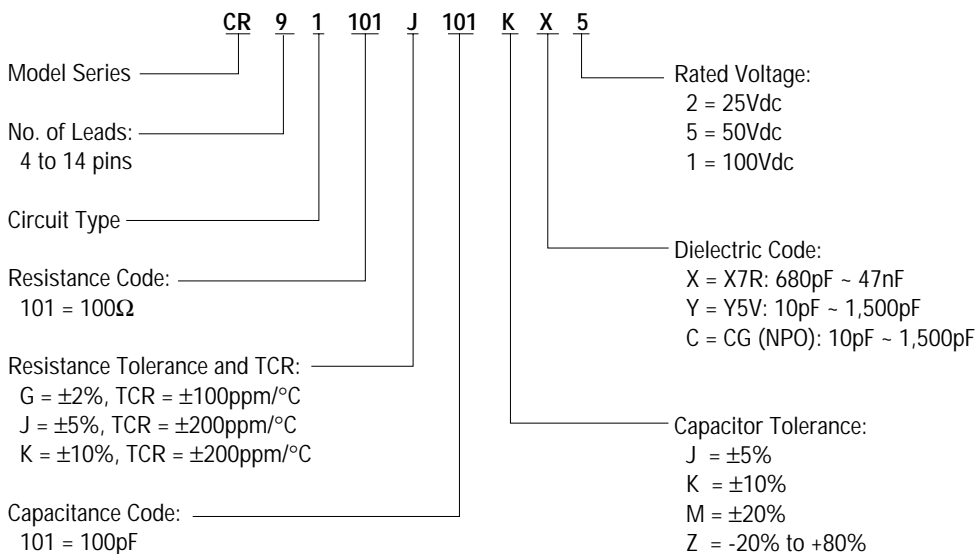


TYPICAL PART MARKING



ORDERING INFORMATION

Circuit 1



Custom Circuits A to U

